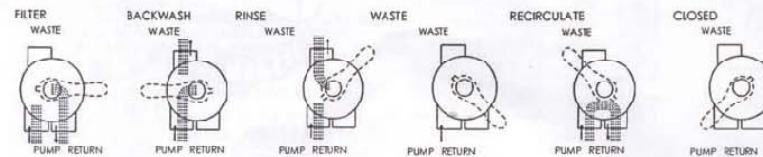
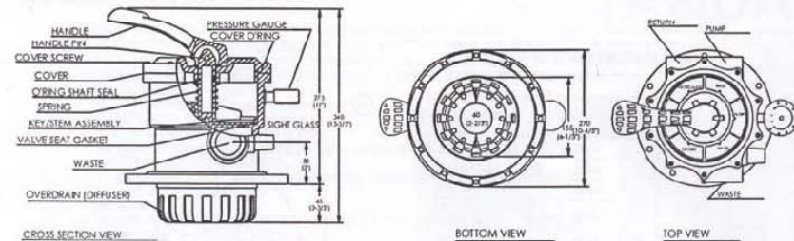


## MULTI-PORT VALVE



Valve Position	Description
FILTER	Normal Filtration and Vacuuming 正常过滤
BACKWASH	Cleaning Filter by reversing the flow 倒冲法 (将过滤器内的污物排出)
RINSE	Used after backwash to flush dirt from valve 底管清洗
WASTE	By-passes filter, used for vacuuming to waste or lowering water level 排水
RECIRCULATE	By-passes filter for circulating water to pool 不经过滤器循环
CLOSED	Shuts off all flow to filter or pool 关 (将过滤器内之功能关上)

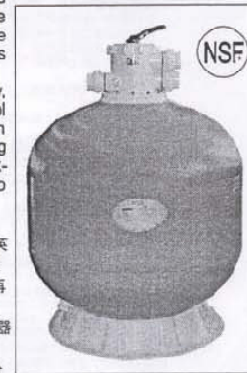
## GENERAL

- Pipe lap boss provided for optional influent pressure gauge.
- Piping stops are provided to prevent over-tightening. Always use teflon pipe tape for connections to provide a good "living" seal. Add extra sealant if male pipe fitting is undersized.
- SERVICING VALVE. If it becomes necessary to service or gain access top the key or valve seat gasket:
  - Set handle in the filter position.
  - Remove cover screws.
  - Lift cover and key assembly out.
    - 吸管上的水龙头能控制水流, 而不会影响压力。
    - 管道间隙是为了防止过于牢固, 一般用乙烯管道来连接会很好, 灵活点。如果大力的管道安装还不够尺寸的话, 就加一些密封剂。
    - 维修缸头。
      - 手柄应设定在正常过滤位置。b. 扭开沙缸头面盖上的螺丝。c. 抬起手柄, 将面盖连分水取出。

## "Q" SERIES SAND FILTER "Q"

MODELS ( ): Q800, Q900, Q1000, Q1100, Q1200, Q1400

## FUNCTION



The filter uses special filter sand to remove dirt particles from pool water. The filter sand is loaded into the filter tank and functions as the permanent dirt removing media. When the control valve is in the FILTER position, the pool water which contains suspended dirt particles, is pumped through your piping system and is automatically directed by the patented filter control valve to the top of the filter tank. As the pool water is pumped through the filter, dirt particles are trapped by the sand bed, and filtered out. The cleaned Pool water is returned from the bottom of the filter tank, through the control valve and back to the pool through the piping system. This entire sequence is continuous and automatic and provides for total recirculation of pool water through your filter and piping system.

After a period of time the accumulated dirt in the filter causes a resistance to flow, and the flow diminishes. This means it is time to clean your filter. With the control valve in the BACKWASH position, the water flow is automatically reversed through the filter so that it is directed to the bottom of the tank, up through the sand, flushing the previously trapped dirt and debris out the waste line. Once the filter is backwashed of dirt, set control valve to RINSE position and run pump for about 1/2 to 1 minute, and then to filter, to resume normal filtering.

**NOTE:** Turn pump off before changing valve position.

沙缸功能是把泳池水中的污物经过沙层的过滤后, 使干净水重新回到泳池内。过滤用的沙是石英沙。而过滤程序是: 首先是缸头控制阀上把手柄推向 FILTER 正常过滤然后启动水泵, 泳池水便通过水泵引入沙缸进口, 之后由进水中流到分水器, 再流入沙缸内, 水经过沙的过滤流进缸的底部, 再经过滤管进入过滤主管, 水在管道中向上流往出口, 之后由管道系统流出泳池中。

经过一段时间后累积的污物, 会影响水的流量。这个时候便需要进行清洗沙缸。因缸头控制阀上把手柄推向 BACKWASH 倒冲, 水流便由过滤主管进入, 经缸底的过滤管排出, 水流从底部向上升, 把沙层内的污物排出, 之后把手柄推向 RINSE 清洗管内之污物从沙缸排出。大约一至半分钟后, 把手柄推向 FILTER 正常过滤。

注意: 转换阀门位置时要先关闭水泵电源。

Only simple tools (screwdriver and wrenches), plus pipe sealant for plastic adapters, are required to install and service the filter.

1. The filter should be placed on a level concrete slab, very firm ground, or equivalent. Position the filter so that the piping connections, control valve are convenient and accessible for operation and service.

2. Loading the sand media. Filter sand media is loaded through the top opening of the filter

a. Loosen flange clamp and remove filter control valve (if previously installed).

b. Cap internal pipe with plastic cap to prevent sand from entering it.

c. We recommend filling tank approximately 1/2 way with water to provide a cushion effect when the filter sand is poured in. This helps protect the under-drain laterals from excessive shock.

d. Carefully pour in correct amount and grade of filter sand. (Be sure center pipe remains centered in opening.) Sand surface should be leveled and should come to about the middle of the filter tank. Remove plastic cap from internal pipe.

3. Assemble filter control valve to filter tank.

a. Insert filter control valve (with O'ring in place) into the tank neck, taking care that the center pipe slips into the hole in the bottom of the valve.

b. Put the twelve nuts and washers onto each of the twelve bolts, then screw all the nuts on with wrench, ensuring that all nuts are tight.

c. Carefully screw pressure gauge (with O'ring in place) into tapped hole in valve body. Do not over-tighten.

d. Connect pump to control valve opening marked PUMP. After connections are made, tighten valve flange clamps with screwdriver, tapping around clamp with screwdriver handle to help seat valve flange clamp.

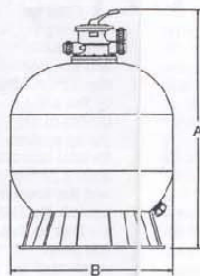
4. Make return to pool pipe connection to control valve opening marked RETURN and complete other necessary plumbing connections, suction lines to pump, waste, etc.

## INSTALLATION

5. Make electrical connections to pump per pump instructions.  
6. To prevent water leakage, be sure all pipe connections are tight.

安装或修理沙缸只需要简单工具（螺丝刀、活动扳手等），螺母拧紧到胶球头上。

- 沙缸要放置在平坦和坚硬的地面上，要有足够的位置给管道系统和缸头的安装，预留通道以便操作和修理。
- 沙缸是装沙的器皿，沙是由沙缸顶部倒入。
  - 松开钳式法兰，打开缸头（之前已装过）。
  - 过滤主管有密封盖，防止污物流动管道中。
  - 我们建议：在沙缸内注入适当份量沙后，再加入半缸水作为缓冲效用。这样便可保护到缸底的过滤管过度的冲击而损坏。
  - 小心加入正确数量的沙（保持过滤主管正中位置）沙的表面要铺平，大约加到沙缸的一半，过滤主管上的盖便可打开。
- 装配沙缸头
  - 插入沙缸头（附有胶圈）进入缸颈位，确保缸头上12个孔，能穿过缸颈上的12颗螺钉，另外要小心过滤。
  - 连接夹缸头与颈上的12颗螺钉和螺母，并加上介子，用活动扳手拧紧，以便使沙缸在沙缸上操作。
  - 小心压力表（附有密封圈）装上缸头上，但是不要扭太紧。
  - 由水泵出入口连接管道到缸头进水口，初步的组合已完成。
  - 接驳管道由出水口到泳池过滤回水口，另外由出水口连接到水泵的出水口，排水口连接到水管到排水槽，水管要安装平行和垂直，才合乎规格。
  - 按好电源后给水泵动作。
- 为了防止漏水，使用前所有管道是否接合妥当。



MAIN DIMENSION

MODEL 型号	HEIGHT 高 (mm)	DIAMETER 直径 (mm)	VALVE BAND 缸头沙重 (kg)
QB800	1200	800	2' 210
Q900	1300	900	2' 310
Q1000	1400	1000	2' 410
Q1100	1460	1120	2' 400
Q1200	1600	1200	2' 500
Q1400	1850	1400	2' 900

## WARNING

THIS FILTER OPERATES UNDER HIGH PRESSURE. WHEN ANY PART OF THE CIRCULATING SYSTEM (E.G. CLAMP, PUMP, FILTER VALVES, ETC.) IS SERVICED, AIR CAN ENTER THE SYSTEM AND BECOME PRESSURIZED. PRESSURIZED AIR CAN CAUSE THE LID OR VALVE TO BE BLOWN OFF WHICH CAN RESULT IN SEVERE INJURY, DEATH, OR PROPERTY DAMAGE.  
\*TURN PUMP OFF BEFORE CHANGING VALVE POSITION.

\*TO PREVENT DAMAGE TO THE PUMP AND FOR PROPER OPERATION OF THE STRAINER AND SKIMMER BASKET, CLEAN PUMP REGULARLY.

\*沙缸操作时会在高压下运作

（夹合，水泵，沙缸，阀门）

需要修理，空气力，使而气压导致外壳或阀门等爆炸，造成受伤

当其中一部份打开时，先停止泵的运作。

\*防止小泵受损，要定期清理

而筛滤器内的垃圾。

## INSTALL/START-UP OF FILTER

- Be sure correct amount of filter media sand is in tank and that all connections have been made and are secure.
- Depress control valve handle and rotate to BACKWASH position. (To prevent damage to control valve seal, always depress handle before turning.)
- Prime and start pump according to pump instructions (be sure all suction and return lines are open), allowing the filter tank to fill with water. Once Water is flowing out of the waste line, run the pump for at least 1 minute. The initial back-washing of the filter is recommended to remove any impurities or fine sand particles in the sand media.
- Turn pump off and set valve to RINSE position. Start pump and operate until water in sight glass is clear, about 1/2 to 1 minute. Turn pump off and set valve to FILTER position and restart pump. The filter is now operating in the normal filter mode, filtering dirt particles from the pool water.
- Adjust pool suction and return valves to achieve desired flow. Check system and filter for water leaks and tighten connections, bolts, nuts, as required.
- Note the initial pressure gauge reading when the filter is clean. (It will vary from pool to pool depending upon the pump and general piping system.) As the filter removes dirt and impurities from the pool water, the accumulation in the filter will cause the pressure to rise and flow to diminish. When the pressure gauge reading is 1.5 bar, higher than the initial "clean" pressure you noted, it is time to backwash the filter (see BACKWASH under filter and control valve functions).

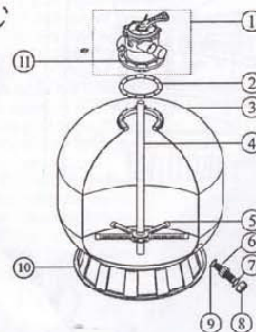
NOTE: During initial clean-up of the pool water it may be necessary to backwash frequently due to the unusually heavy initial dirt load in the water.

- 确定沙缸内的沙数量正确，同时所有管道系统连接妥当。
- 将阀门控制手柄压下并转到倒冲位置，为了防止阀门密封装置不受损坏，用阀门控制前一定要先压下手柄才转动。
- 按照水泵程序启动（确定所有进水和出水管是开启）给水进入沙缸，作为首次启动系统，水泵最少也运行一分钟，另外建议最初使用反冲功能因为可以除去系统内的污垢或沙中较细的粒子。
- 将水泵，同时沙缸头转向清洗及排出污物的位置，之后开水泵，直至清水顶部的水流清澈，大约半至一分钟，便停泵。这时沙缸便进入正常过滤模式，把泳池水的污物过滤。
- 当水流达到适合的水流，检查系统，沙缸和系统位置是否漏水，橡胶密封圈等是否妥当。
- 当沙缸清洗时便记录下压力表的读数。（读数的变化将会受泳池水泵和水管系统影响），如沙缸过滤池水，把污物留下，而累积污物会造成压力上升和水流减慢，当压力表读数1.5巴，相对比当初（清）记录要高，这时便要使用反冲沙缸。（参考反冲功能章节）。

注意：在过滤系统启动初期，将泵多次使用反冲功能，因为初期的泳池水一定有污垢，流入沙缸便会积聚较多污垢和微粒。

## REPLACEMENT PARTS OF FILTER

ITEM	PART NO.	DESCRIPTION
1	QF31	VALVE 缸头
2	QF32	GASKET OF FLANGE 法兰圈
3	QF33	FILTER TANK 缸身
4	QF34	LATERAL ASSEMBLY WITH CENTER PIPE 过滤主管
5	QF35	LATERAL 过滤管
6	QF36	DRAIN 排水点
7	QF40	O'RING 胶垫圈
8	QF41	DRAIN CAP 排水底座
9	QF39	O'RING 胶垫圈
10	QF38	FILTER SUPPORT STAND 过滤架
11	QF37	NUT HEX 螺母



## REPLACEMENT PARTS OF MULTI-PORT VALVE

ITEM	PART NO.	DESCRIPTION
1	QV31	Handle 手柄
2	QV32	Lock Pin 锁紧销
3	QV33	Washer 小垫圈
4	QV34	Screw 螺丝
5	QV35	Cover 缸头盖
6	QV36	Washer 大垫圈
7	QV37	Spring 弹簧
8	QV38	O'ring 分水圈胶圈
9	QV39	O'ring of Cover 盖圈胶圈
10	QV40	Divertor Head 分水器
11	QV41	Gasket 止水圈胶圈
12	QV42	Body 阀体缸身
13	QV46	Nut Hex 螺母
14	QV47	O'ring 分水盖胶圈
15	QV45	NUT HEX 内牙头
16	QV48	O'ring for Sight Glass 清水镜胶圈
17	QV43	Sight Glass 清水镜
18	QV44	Pressure Gauge 压力表
19	QV52	O'ring 内牙头胶圈
20	QV51	Threaded Tail Piece 内牙头
21	QV50	Union Head 管接头
22	QV49	Union Nut 外牙套

